



# GAT MONTHLY MEMBERSHIP PROGRESS REPORT

Results as of: 8/31/2021

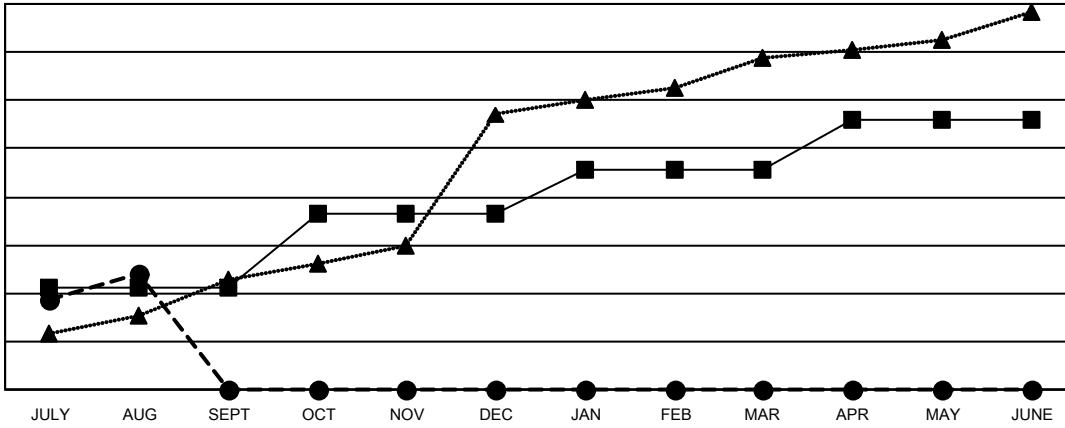
Multiple District 321

LOCATION: INDIA

Clubs			
RESULTS FOR 2021-2022			
QUARTER	NEW CLUB GOAL	NEW CLUBS	DROPPED CLUBS
JULY/AUG/SEPT	42	48	59
OCT/NOV/DEC	31	0	0
JAN/FEB/MAR	18	0	0
APR/MAY/JUNE	21	0	0

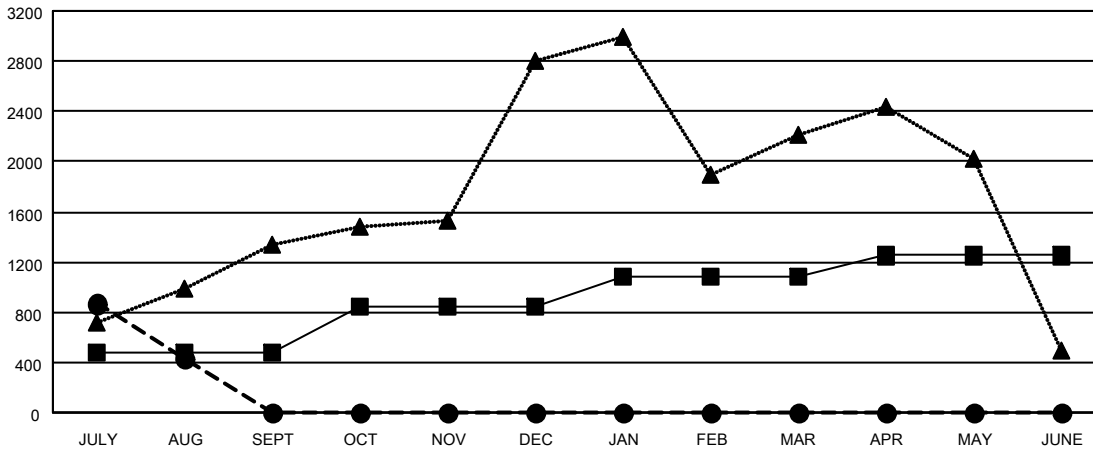
Members			
RESULTS FOR 2021-2022			
QUARTER	MEMBER GROWTH NET GOAL	MEMBER GROWTH ACTUAL	DROPPED MEMBERS ACTUAL (including transfers)
JULY/AUG/SEPT	480	2,058	1,453
OCT/NOV/DEC	370	0	0
JAN/FEB/MAR	235	0	0
APR/MAY/JUNE	165	0	0

GOALS AND ACTUAL NEW CLUBS CUMULATIVE



- CURRENT YEAR GOALS FOR NEW CLUBS
- CURRENT YEAR ACTUAL NEW CLUBS
- ▲- LAST YEAR ACTUAL NEW CLUBS

GOALS AND ACTUAL MEMBERS CUMULATIVE



- MEMBER GROWTH NET GOAL
- MEMBER GROWTH ACTUAL
- ▲- LAST YEAR MEMBERSHIP ACTUAL

DROPPED CLUBS: 59	
<b>DROPPED MEMBERS</b>	
DECEASED	24
CLUB CANCELLED	811
OTHER	618
<b>TOTAL</b>	<b>1,453</b>

268 CLUBS OF 1162 ADDED 1 OR MORE NEW MEMBERS

[CLICK HERE FOR CUMULATIVE MEMBERSHIP DATA](#)

GENDER DISTRIBUTION	
MALE	21,442 (69.64%)
FEMALE	9,347 (30.36%)
NON BINARY	0 (0.00%)
PREFER NOT TO ANSWER	1 (0.00%)
<b>TOTAL FAMILY UNIT MEMBERS</b>	<b>17,413</b>
<b>FAMILY MEMBERS PAYING HALF DUES</b>	<b>10,480</b>